

# COMMUNITY HEALTH NEEDS ASSESSMENT FINDINGS

Pioneer Medical Center engaged in a community health needs assessment process, administrated by the Montana Office of Rural Health and funded in part through the Montana Health Research and Education Foundation (MHREF) Flex Grant.

In the summer of 2018, an environmental scan of all relevant data was conducted to gather health, economic and demographic information for Sweet Grass County. Existing data in the form of surveys and county/state reports were utilized. In addition, the Montana Office of Rural Health staff traveled to Big Timber and held 4 focus groups and 2 key informant interviews. To view the full report visit Pioneer Medical Center's website at <https://pmcmt.org/>

## Focus Group Findings

### Desired local healthcare services:

- Home health services
- Counseling and mental health services
- Eye doctor
- Alcohol and drug abuse services
- More visiting specialists
- Ultrasound
- Resources available to be physically fit



### Ways to improve community's healthcare:

More mental health services

Increase utilization of tele-med services



More community collaboration of available resources

### Most important local healthcare issues

- Drug and alcohol abuse
- Lack of mental health services
- Sedentary lifestyles and obesity
- Chronic disease and illness
- Lack of Emergency Medical Service volunteers



### Opinion of Hospital Services

- Community members appreciate the PT [physical therapy] and audiology services
- Participants like having a facility in town, so they don't have to travel
- Some community members felt it was difficult to be seen at the clinic
- Participants appreciated current services while also highlighting potential areas for service expansion
- The availability of visiting specialists is appreciated

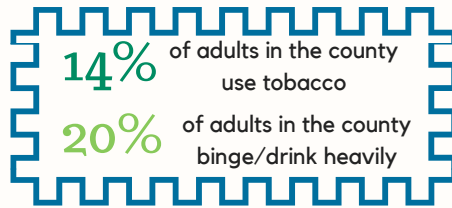


Focus group participants indicated that they use the local providers because they want to support the local healthcare services

# Sweet Grass County Health

## Leading Causes of Death

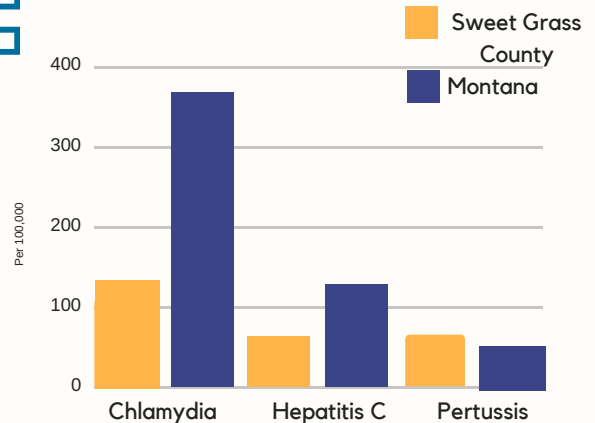
- Heart Disease
- Cancer
- Chronic Lower Respiratory Disease
- Motor Vehicle Accidents
- Suicide
- Drug Overdose



## Top Behavioral Risk Factors:

- Tobacco Use
- Binge Drinking
- Seat-belt Use
- Obesity

Sweet Grass County has significantly lower communicable disease rates in comparison to Montana



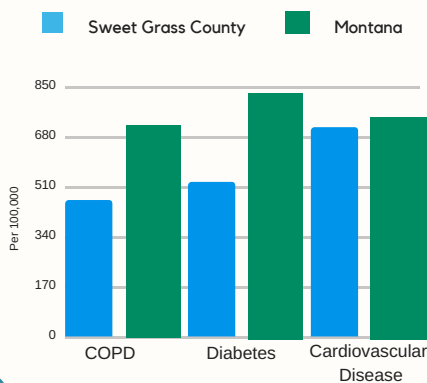
The childhood immunization rate for Sweet Grass County is 66.7% compared to the state of Montana at 65.6%.

26% of adults in Sweet Grass County are considered to be obese (BMI > 30)

21% of Sweet Grass County residents report that they have no leisure time for physical activity

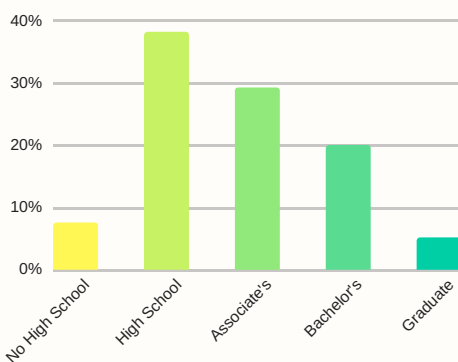


Sweet Grass County has significantly less chronic disease inpatient admission rates in comparison to Montana for chronic obstructive pulmonary disease (COPD) and diabetes



## County demographics

### Educational Attainment



### Ethnicity

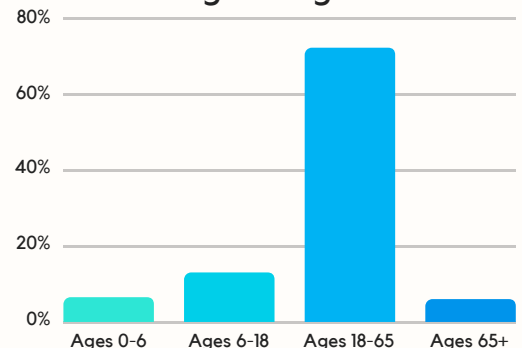
- White (94.6%)
- American Indian or Alaska Native (0.9%)
- Other (4.5%)

### County Population

49.0% Female  
51.0% Male



### Age Range



### Median Income

\$50,813

3.1% Unemployment Rate

9.8% Persons below Poverty level. 11% Children in poverty.

## Sources